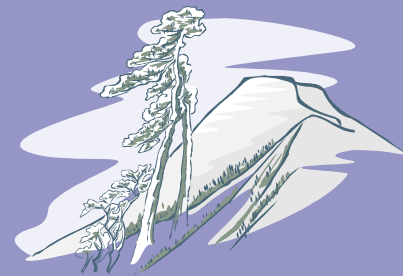


Issue 26
September-October, 2009

SIERRA NEVADA CHAPTER 46
INTERNATIONAL RIGHT OF WAY ASSOCIATION



The Zephyr



CHAPTER OFFICERS

President

Kelly Hirning
Truckee Meadows Water Authority
P.O. Box 30013
Reno, NV 89520
775-834-8214
khirning@tmwa.net

Vice-President

John Dyer, RG, CEM
Amec
780 Vista Blvd.— Suite 100
Sparks, NV 89434-6656
775-331-2375
John.dyer@amec.com

Secretary

Kathy Renfrow
NV Energy Company
P.O. Box 10100
Reno, NV 89520-0024
775-834-4273
krenfrow@nvenergy.com

Treasurer

Karen SooHoo
Property Specialists Inc.
975 Roberta Lane — Suite 104B
Sparks, NV 89432
775-332-6500
Karen@property-specialists.net

Newsletter Editor

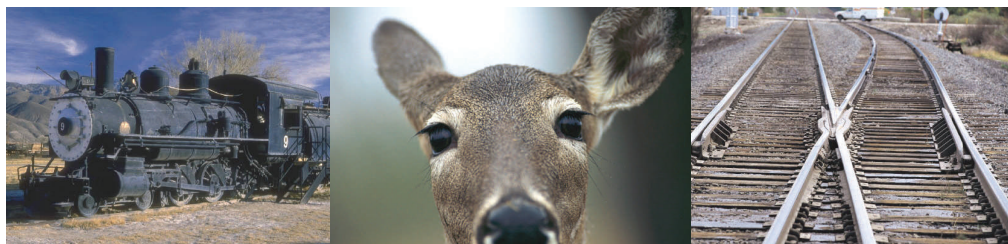
Carol Buonanoma, CMS, GISP
Washoe County Assessor's Office
P.O. Box 11130
Reno, NV 89520-0027
775-328-2225
cbuonanoma@washoecounty.us

Assistant Editor

Kelly Hirning
Truckee Meadows Water Authority
P.O. Box 30013
Reno, NV 89520
775-834-8214
khirning@tmwa.net

The V & T Railroad Rolls Again

By Heather Edmunson, SR/WA, R/W-NAC



ALL ABOARD!!!! It's time to gather up our colleagues, friends and family for a fun fall adventure! Please join us to RIDE THE V & T RAILROAD from Carson City to Virginia City and back, at 10:00 a.m. on **Saturday, October 31st.**

The trip is twelve miles long and will last about an hour and a half. We will depart from the newly constructed Eastgate interim station located on the east side of Carson city. Once onboard, we'll experience a scenic journey following the historic Comstock era route through the Flowery Mountains to Virginia City. Along the way, we may see exposed silver ore veins and possibly some wild mustang horses and other wildlife. Points of interest include Tunnel No. 2, which is 566 feet long, Comstock mines and mills and the historic Gold Hill Station which was completed in September, 1869 and restored in the 1990s. There is a three hour lay-over in Virginia City where we will have the opportunity to lunch together or on our own. The lunch place will be announced in the near future. The trip arrives back in Carson City at 4:30 p.m.

Tickets are \$40 for adults, \$30 for children 12 and under and \$34 for seniors over 65 and veterans.

Call Heather Edmunson at 834-8071 or email her at hedmunson@tmwa.net to place your ticket order ASAP!!

Inside this issue:

President's Message	2
Recertification	3
Southeast Connector	4-5
Apathy	6
Announcements	6
Region 1 on Facebook	7
Upcoming Classes	7



Message from the President

By Kelly Hirning



Karen Soohoo and Kelly at the International Education Conference in Indianapolis

Greetings Members and Friends!
It seems like it was only yesterday that I was just becoming a member of IRWA Chapter 46. Oh my gosh...now I am your President! It is hard for me to believe. In hopes of doing a good job and meeting your expectations this year please don't hesitate to express any feelings, concerns or thoughts you may have about our group or what we do. No question is a dumb question! Please feel free to email me or give me a call anytime.

I ask all of you to please think about ways to improve our chapter business. The more ideas you give the better. If you really feel passionate about something what better way to make it happen other than becoming a volunteer! Get involved! It really can be rewarding and you form wonderful new relationships.

Indianapolis was a great conference. I attended all of the HQ educational sessions and I met many of the personnel from the main office in Torrance, California. I met Valerie Fries and the new Business Development Officer, Daniel Stekol my first night there which I felt gave me an upper edge on my whole experience at the conference. Not many attendees had arrived yet, I was there early taking my SR/WA Exam. There really is little time to have a good conversation with anyone once things start winding up with the meetings... and the sessions...and more meetings...and more sessions. Frank Abignale was the guest speaker at the Opening Ceremony. I am still in awe when I recall how mesmerizing the man speaks and grasps on to an audience. He told the true story of "Catch Me If You Can" which is not far off from the Steven Spielberg movie. He was very captivating. I would also like to add that Patti Espin's name was called for Chapter 46 at the SR/WA Recognition Breakfast. Congratulations Patti!

I learned a lot about IRWA while I was in Indy. There is so much to learn! Mark Reick and Daniel Stekol are on the 'fast track' to improving communications and providing information to IRWA members. They have come up with a new look and are trying to increase recognition of IRWA as a professional organization to more of the general public. IRWA's 75th Anniversary is coming up this October and I have a feeling it's going to be a humdinger! Did I just say humdinger?

By the way, I passed the SR/WA Exam! The facilitator was Clyde Johnson, out of Alpharetta, Georgia, retired from the Federal Highway Administration, who happened to facilitate a couple of courses for us this last July. He is an excellent facilitator to say the very least! We are going to try to get him back and if you happen to see him as the facilitator for any upcoming courses I strongly suggest you register for that course. You will not be disappointed!

We have a lot of new blood on the board this year with Karen SooHoo as Treasurer and Kathy Renfrow as Secretary, please give them a warm welcome. And thanks to John Dyer for making a commitment as he volunteers yet again.

Looking forward to a great and prosperous year!

Warm Regards,

Chapter 46 President,

Kelly Hirning

COMMITTEE CHAIRS

Asset Management

Lori Miles
775-334-3396
miles@ci.reno.nv.us

Education

Carolyn Carrica, SR/WA
775-834-4989
ccarrica@nvenergy.com

Environment

John Dyer, RG, CEM
775-331-2375
John.dyer@amec.com

Historian

Kelly Hirning
775-834-8214
khirning@tmwa.net

Local Public Agency

Lori Miles
775-334-3396
miles@ci.reno.nv.us

Membership

Heather Edmunson
775-834-8071
hedmunson@tmwa.net

Nominations and Elections

To Be Announced

Pipeline

Ken Briscoe
775-834-8021
kbriscoe@tmwa.net

Professional Development Chair 1

Patty Paulson, SR/WA
775-332-6500
patty@property-specialists.net

Professional Development Chair 2

Carolyn Carrica, SR/WA
775-834-4989
ccarrica@nvenergy.com

Professional Development Chair 3

To Be Announced

Relocation Assistance

Patty Paulson, SR/WA
775-332-6500
patty@property-specialists.net

Survey

David Crook
775-358-9491
dcrook@tristateld.com

Transportation

Alan Yoshida
775-332-2144
ayoshida@rtcwashoe.com

Utilities

Frank Borghetti
(775) 834-7127
fborghetti@nvenergy.com

Valuation

Steve Johnson, MAI
775-322-1155

Web Site

Carol Buonanoma, CMS
775-328-2225
cbuonanoma@washoecounty.us

Photographer

Frank Borghetti
775-834-7127
fborghetti@nvenergy.com



Recertification: What You Need to Know

By Carolyn Carrica, SR/WA



In this issue of the Zephyr, we are going to talk about recertification. Once you have acquired your chosen designation you just can't put it up in your office and forget it. Each designation lasts for a specific amount of time and has specific requirements for that designation to be renewed. I have built a matrix below with directions on each designation that should help keep you on track to renewal. Remember never leave it to the last minute, you may not renew on time and could possibly lose your designation.

SR/WA Program

IRWA requires all SR/WA members to recertify every 5 years to maintain their professional designation. Don't wait until the last year to do so. Check your plaque now and add 5 years to the date on the plaque. This is the date by which you have to renew your designation.

Requirements for renewal:

75 CEUs (Continuing Education Units) these can be earned by attendance or facilitation of courses or seminars that have been approved by the IPDC (International Professional Development Committee).

Of the 75 CEUs, a minimum of 16 must be earned by attendance as a participant or facilitator in an IRWA course and 8 CEUs must be earned by meeting the Ethics Course Requirement.

The rest of the 51 CEUs can be obtained by several options:

Each IRWA Annual Educational Seminar can gain you up to 24 CEUs. To do this you have to be a paid attendee.

IRWA Chapter seminars, meetings, regional forums and any non-IRWA program must be submitted to the IPDC for recertification credit approval before the presentation of the event.

All records of the CEUs must be kept by YOU and

must be submitted only with the paper work as supporting documentation with the recertification application. The deadline is 5 years from the initial designation and applications will be accepted at headquarters up to 1 year before the due date. Online course require you to take the exam. Courses or Seminars from third parties will also require you to take the exam. IRWA's courses don't but might in the future. Take the exam it keeps you in tune with the class.

R/W Certification Program

IRWA requires the R/W members must recertify every 5 years to maintain your professional designation. Don't wait until the last year to do so. Check your plaque now and add 5 years to the date on the plaque. This is the date by which you have to renew your designation.

Requirements for renewal:

Of the 30 CEUs (Continuing Education Units) these must be earned by attendance or facilitating courses or seminars approved for recertification credit by the IRWA. 8 CEUs must be obtained by attendance as a participant of facilitator in a course of your particular discipline and 8 CEUs must be earned through meeting the Ethics Course requirement.

R/W-AC members must successfully complete Course 406B or 7-hour USPAP within each 5 year recertification period.

R/W Certification designees can receive up to 16 CEUs for paid attendance at IRWA's Annual International Education Conference

R/W certified members taking class for recertification credit are not required to take the course exam. However courses taken for other CE (continuing education) or other type of credit, for license renewal or other purposes are required to take the exam. Take the exam if you have to take a test you keep more in tune with the class.

Next newsletter I'll answer any questions you have just send them to me at ccarrica@nvenergy.com.



South East Connector Progressing

By Garth Oksol, P.E., Regional Transportation Commission

Planning for a north-south roadway connecting the southern and eastern parts of the Truckee has been ongoing for more than 35 years. Proposed to reduce traffic congestion on other major routes in the area, the new arterial roadway will be a vital link.

The RTC Board of Commissioners gave direction to RTC staff to complete an alignment study for the preferred SouthEast Connector Valley Corridor in January 2007. Studies show the corridor has the least effect on home sites, has the lowest cost and can be incorporated into the regional flood control facilities. In November 2008, the board voted in favor of the recommended alignment for the SouthEast Connector in what is called the Valley Corridor.

With the SouthEast Connector, relieving congestion in the area will have a ripple effect that benefits the entire region. Based upon recent zone changes and developments, the population of the Truckee Meadows is projected to increase significantly by 2040, the year transportation planners use for long-range planning.

Without the SouthEast Connector, traffic on East McCarran Boulevard, the main thoroughfare will reach critical capacity within the next 10 years and will continue to be congested, spilling traffic onto most other alternatives.

Development within Sparks and Reno has been approved based on certain assumed conditions. One of those was that the SouthEast Connector would be built in the near future, as stated in the Regional Transportation Plan. Northern Sparks was planned and developed to be primarily a residential community, while south Reno was planned and developed to host multiple employment opportunities in part because traffic models show the SouthEast Connector as built and able to handle the future traffic flows. Without it, the entire roadway system would suffer greatly.

Not building the SouthEast Connector and widening existing roads was an option that was considered. A major obstacle with widening existing roadways would be the impact to numerous existing homes and businesses, that would need to be acquired to make room for bigger roads needed if the SouthEast Connector is not

built. Though the roads may still need to be widened, by building the SouthEast Connector, they would need fewer traffic lanes.

The SouthEast Connector is not a freeway, but will be similar to some of the new regional roads built in the southeast part of the Truckee Meadows. Examples include Steamboat and Veterans parkways. The SouthEast Connector section of Veterans Parkway already built will be incorporated into the SouthEast Connector alignment.

The corridor the RTC studied was approximately 1,500 feet wide but the right-of-way required for this roadway will only be approximately 150 feet wide. The additional corridor space allowed the designers to move the roadway alignment around for the best project possible. The selected alignment is at least 270 feet from the nearest home and future design work will try to increase the distance.

To avoid the threat of floods, the project has been integrated into the United States Army Corp of Engineers Flood Model. The goal of the RTC was to abide by the draft ordinances of the three local governments and:

- Not raise the water surface elevation of a 117-year flood event
- Not cause any adverse impact to any improvements as part of the flood control project
- Not increase flows
- Provide at least 1:1 mitigation adjacent to the alignment.

The SouthEast Connector is a high access control roadway, with a very limited number of intersections, driveways and cross streets allowed, for better traffic flow and a safer drive. Additional investigation and design will be required to determine specific intersection improvements, including the potential use of roundabouts. The project will have components for pedestrian and bicycle travel and will accommodate truck traffic.

Discussions have begun with the City of Reno about effects to the Rosewood Lakes Golf Course. The preliminary cost estimate for the SouthEast Connector includes money to mitigate these effects.

(Continued on page 5)



(Continued from page 4)

Effects on wildlife will also be mitigated. The SouthEast Connector must follow all requirements for avoidance, minimization, and mitigation of wetlands and staff will work with the United States Army Corp of Engineers during the permitting process. The RTC will

The RTC has established an ongoing dialogue with the appropriate agencies and interested community groups to ensure all necessary mitigation requirements are met. Contact the RTC if you are interested in adding your agency or group.



SOUTHEAST CONNECTOR
VETERAN'S PARKWAY TO SPARKS BOULEVARD



also work with United States Fish & Wildlife and the Nevada Department of Wildlife regarding any wildlife in the area of the Valley Corridor.

The RTC will look for alignment opportunities to minimize noise and visual impacts. Noise studies and abatement measures will be a part of later project phases. RTC will follow its Procedures for Abatement of Highway Traffic Noise and Construction Noise Impacts.

For additional information, please contact:
Garth Oksol, Project Manager
Regional Transportation Commission
775-332-2137
goksol@rtewashoe.com



Who Cares About Apathy?

By Carol Buonanoma, CMS, GISP

For anyone who thinks Apathy (last name Lethargy) is a new member of Chapter 46, here is the definition from The Oxford American Dictionary:

ap•a•thy (ap-ă-thee) *n.* lack of interest or concern

If this describes how you feel about the IRWA in general, or Chapter 46 in particular, it may be time to do something about it.

There is a cure. You can overcome apathy by getting involved and participating in activities, like our upcoming V & T Train Ride. You can make a commitment to attend our monthly membership meetings. Submitting an article for publication in the Zephyr will help involve you in the organization while at the same

time inform other members about your subject.

These are difficult times in our work and personal lives. Many of us are distracted by financial issues, understaffing in the workplace and fears about job security.

These are serious issues that worry us. In times like these, we must strengthen our professional alliances and spend time in the company of people who share our work-related interests.

We're looking forward to seeing you at the next membership meeting which will be held at NVEnergy, 6100 Neil Road in Reno, on the third Wednesday of the month. We are still in the cafeteria conference room.



We'll save you a seat.

Announcements

We have three new members! Welcome to **Daniel Heath** from the Nevada Department of Transportation and **Teri Kiapos** and **Deanna Vieira** who both work for A.T.&T.

Heather Edmunson, SR/WA, R/W-NAC, Land Agent for the Truckee Meadows Water Authority acquired her Nevada Real Estate License in June.

Don't forget the **Region 1 Fall Forum** to be held in San Francisco on October 3rd. For details go to the Region 1 website.

October is International Right of Way Month. Check out the new **IRWA Advantage Rewards Program**. Details are on the Region 1 website.

region1.irwachapter46.org

Kevin Olsen who works for the State of Nevada, Division of State Lands has received his Right of Way Negotiation/Acquisition Certification (R/W-NAC) from the International Right of Way Association.



Meeting Dates

Board	September 2, 2009
Membership	September 16, 2009
Board	October 7, 2009
Membership	October 21, 2009
Board	November 4, 2009
Membership	November 18, 2009
Board	December 2, 2009
Membership	December 16, 2009
Board	January 6, 2010
Membership	January 20, 2010
Board	February 3, 2010
Membership	February 17, 2010
Board	March 3, 2010
Membership	March 17, 2010
Board	April 7, 2010
Membership	April 21, 2010
Board	May 5, 2010
Membership	May 19, 2010



Next Meeting Noon to 1:00

September 16, 2009

Location:

NV Energy
6100 Neil Road—Reno, NV
Cafeteria Conference Room

Our speaker will be Terri Svetich with the City of Reno speaking about utility crossings.

Region 1 On facebook

By Carol Buonanoma, CMS, GISP

Going along with current business trends, Region 1 now has a page on facebook. We even have a fan. Those of you with facebook accounts, please go to our new page and become fans! We're getting lonely.

There's a photo album there full of pictures Chris Banks took at the conference in Indianapolis. Anyone who has something to say to everyone can post messages. This may be a good means of communication between all our members and a possible alternative to the "reply to all" emails that tend to circulate when issues and concerns come up.

To zip right to the Region 1 facebook page, go to the Region 1 website and click on the link.

region1.irwachapter46.org



Upcoming Classes

By Carolyn Carrica, SR/WA



We are at the start of a new year for Chapter 46. There are already three courses in the works for our Chapter. Course 502 (Business Relocation Assistance) is scheduled for November 12th and 13th coordinated by Lori Miles @ 334-3396, Course 410 (Reviewing Appraisals in Eminent Domain) is scheduled for January date to be set coordinated by Kathy Renfrow @ 834-4273 and Course 200

(Principles of Real Estate Negotiation) is scheduled for March 3rd & 4th coordinated by Karen Soohoo @ 332-6500 extn.105.

If you are interested in any of these courses please call the coordinator and let her know.

Zephyr Advertising Rates:

2" x 3.5" (business card size) \$25.00 per year

3.5" x 4.5" (quarter-page) \$75.00 per year

4.5" x 7" (half-page) \$150.00 per year

7" x 9" (full-page) \$300.00 per year

Robert Schiffmacher, MAI

Real Estate Appraiser

*Commercial & Industrial Properties
Eminent Domain • Rights of Way • Easements*

Warren & Schiffmacher, LLC

85 Keystone Ave. #C, Reno, NV 89503

Phone: (775) 686-2622

Fax: (775) 688-4681

bobws@gbis.com



PATTY PAULSON, SR/WA
President

975 Roberta Lane
Suite 104B
Sparks, NV 89432

patty@property-specialists.net

TEL: (775) 332-6500

FAX: (775) 332-6510

Acquisition, Relocation & Project Administration Consultants



John R Dyer PG, CEM
Senior Project Manager
Environmental Services
Earth & Environmental

780 Vista Blvd, Suite 100
Sparks, Nevada
USA 89434-6656

Tel (775) 331-2375

Cell (775) 770-0035

Fax (775) 331-4153

john.dyer@amec.com

www.amec.com



O. R. Colan
ASSOCIATES

REAL ESTATE SOLUTIONS FOR PUBLIC AGENCIES

Allen A. Armstrong

ASA, SR/WA, RW/RAC

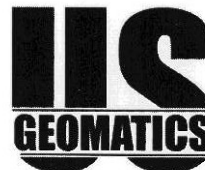
Broker

Vice President

201 W. Main Street, Suite 103, Pflugerville, TX 78660

phone 512-989-3100

aarmstrong@orcolan.com • www.orcolan.com



A LAND SURVEY/GIS COMPANY

www.usgeomatics.com

GLEN C. ARMSTRONG PLS, WRS
PRESIDENT

CELLULAR (775) 560-8516

garmstrong@usgeomatics.com

227 VINE ST • RENO, NV 89503 • TELEPHONE (775) 786-5111 • FAX (775) 786-5114
PO BOX 3299 • RENO, NV 89505