



CONTACTS

President

John Dyer, PG, CEM
Amec Earth and Environmental
780 Vista Blvd.—Suite 100
Sparks, NV 89434-6656
775-331-2375
John.dyer@amec.com

Vice-President

Karen SooHoo
Property Specialists Inc.
975 Roberta Lane—Suite 104B
Sparks, NV 89432
775-332-6500
Karen@property-specialists.net

Secretary

Kathy Renfrow
NV Energy Company
P.O. Box 10100
Reno, NV 89520-0024
775-834-4273
krenfrow@nvenergy.com

Treasurer

Jo Pinther
Property Specialists Inc.
975 Roberta Lane—Suite 104B
Sparks, NV 89432
775-332-6500
JPinther@property-specialists.net

Newsletter Editor

Carol Buonanoma, CMS, GISP
Washoe County Assessor's Office
P.O. Box 11130
Reno, NV 89520-0027
775-328-2225
cbuananoma@washoecounty.us

Assistant Editor

Kelly Hirning, SR/WA
Truckee Meadows Water Authority
P.O. Box 30013
Reno, NV 89520
775-834-8214
khirning@tmwa.net

Inside this issue:

<i>Spotlight on Ruth Borrelli</i>	2
<i>Latitude and Longitude</i>	3
<i>Upcoming Classes</i>	4



December Luncheon Meeting to be Held in Carson City

By Carol Buonanoma, CMS, GISP



Our December 15th meeting will be held at the El Aguila Real Restaurant in Carson City. It's located at 3220 Highway 50, #6. The meeting will start at noon,

but plan to arrive a little early. Lunch selections will offer a choice of the enchilada and taco plate, the two enchilada plate or the burrito plate. All include rice,

beans and beverage. The cost is \$10.00, which includes the tip. RSVP to Karen SooHoo at 332-6500 or contact her by email at Karen@property-specialists.net

Senior Companions to Receive Chapter 46 Holiday Donations

By Carol Buonanoma, CMS, GISP

Anne DeBolt is heading up our effort to brighten the holidays for some of the seniors in our community.



The Senior Companion Program operates under the Senior Corps which is a national organization of volunteers who help older people by running errands, doing household chores and giving breaks to caregivers who look after seniors who are able to continue living in their own homes. Some of the people who are helped by this organization are alone with no family members or friends who live nearby to help them or make them feel like someone cares about them. Many of these people are homebound and must rely on others to

drive them to appointments or run errands for them.

Gift suggestions are blankets, Snuggies, warm socks, scarves, gloves, hats, and Walmart gift cards. Even personal items most of us take for granted would be welcome: lotions, soaps, disposable razors, toothpaste, deodorant, etc. Food items in pop-top cans such as soups, tuna, turkey and ham would be appreciated.

Don't wrap the items, just bring them to the December

15th Chapter 46 meeting, or you can drop them off at Property Specialists, Inc. at 975 Roberta Lane, Suite 104B, in Sparks. You can also bring the items to NV Energy at 6100 Neil Road in Reno. Just ask the guard at the front desk to call Kathy Renfrow and she'll come to the lobby and receive them from you. Try to have them to either location by December 13th.

Senior Companions are always looking for volunteers. If you are interested in learning more about this organization, they can be contacted through the website for the Senior Corps at www.seniorcorps.org

COMMITTEE CHAIRS**Asset Management**

Lori Miles
775-334-3396
milesl@ci.reno.nv.us

Education

Carolyn Carrica, SR/WA
775-834-4989
research.cac@gmail.com

Environment

John Dyer, PG, CEM
775-331-2375
john.dyer@amec.com

Historian

Kelly Hirning, SR/WA
775-834-8214
khirning@tmwa.net

Local Public Agency

Lori Miles
775-334-3396
milesl@ci.reno.nv.us

Membership

Heather Edmunson, SR/WA
775-834-8071
hedmunson@tmwa.net

Nominations and Elections

(Vacant)

Pipeline

Ken Briscoe
775-834-8021
kbriscoe@tmwa.net

**Professional Development
Chair 1**

Carolyn Carrica, SR/WA
775-722-6698
research.cac@gmail.com

**Professional Development
Chair 2**

Carrie Byron, SR/WA
775-328-6486

**Professional Development
Chair 3**

Kelly Hirning, SR/WA
775-834-8214
khirning@tmwa.net

Relocation Assistance

Patty Paulson, SR/WA
775-332-6500
patty@property-specialists.net

Survey

David Crook
775-358-9491
dcrook@tristateitd.com

Transportation

Alan Yoshida
775-332-2144
ayoshida@rtwashoe.com

Utilities

Frank Borghetti
(775) 834-7127
fborghetti@nvenergy.com

Valuation

Steve Johnson, MAI
775-322-1155

Web Site

Carol Buonanoma, CMS, GISP
775-328-2225
cbuonanoma@washoecounty.us

Photographer

Frank Borghetti
775-834-7127
fborghetti@nvenergy.com

Spotlight on New Chapter 46 Member, Ruth Borrelli

By Ruth Borrelli

Ruth Borrelli has over 14 years of right-of-way experience. She began her career in transportation when hired by the Nevada Department of Transportation in 1993 as an office manager for a construction crew in Las Vegas. After serving as an Engineering Technician, she later transferred to Right-of-Way Engineering in Carson City and, later, to the NDOT Design Section where she continued her training by participating in the Engineering in Training program through the NDOT. However, Ruth realized that right-of-way was her preferred area and transferred into the Department's agent series starting as an Agent in the Utility Section. Soon she expanded her experience into right of way acquisitions, property management and relocation.

Her areas of experience include program development, project management, right-of-way engineering, acquisition, utility coordination, coordination of Union Pacific Railroad right-of-way grants and approvals, preparation of contract agreements for the relocation of utilities, contract agreements, legal descrip-

tions, mapping and deeds for the acquisition of rights-of-ways, successful negotiations for the procurement of rights-of-way and relocation of utilities that included submittal packages for the Nevada Public Utility Commission leading to the approvals of projects. Additional experience includes Project Contract Management,

Northern District's property management, acquisition and relocation section for the last two years. She was recently appointed as the Deputy Chief Right-of-Way Agent for Nevada's Department of Transportation.

Ruth enjoys playing tennis with her husband in the beautiful spring, summer and fall weather in Northern Nevada and can be found as a "regular" at the Heavenly Ski resort during the winter season. She also is an accomplished musician having completed her BS in General Studies with an emphasis in music and literacy from the University of Nevada, Reno where she studied toward her Master's in Vocal Performance. Ruth toured with the world-renowned

rock-band "Heart" playing keyboards, flute, trombone and French horn. Additionally, she has sung with TOCCATA, Nevada Opera and Reno Philharmonic Choruses and has been featured as a vocal soloist singing roles such as Queen of the Night in Mozart's "The Magic Flute" and soprano soloist in Handel's "Messiah".



Consultant Management, preparing Requests for Proposals, drafting and reviewing right of way plans, reviewing title packages, writing legal descriptions and performing survey calculations for real property acquisition and right-of-way services in Nevada, California, Colorado, and Arizona.

Ruth has served as the Supervisory Right of Way Agent for the Department's

Latitude & Longitude – Practical Relationships

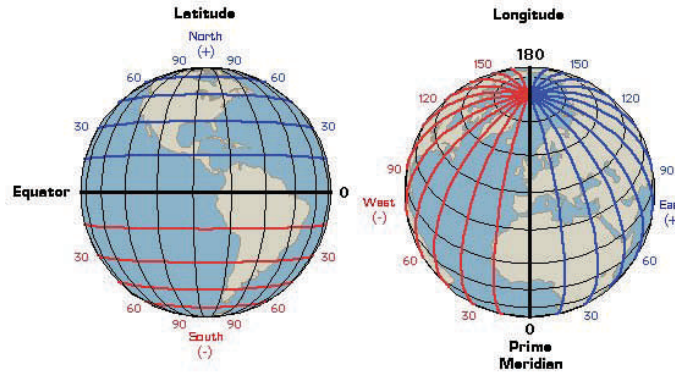
By Mike Hart, PLS, CFedS

With the ready availability of inexpensive and reasonably accurate Global Positioning System (GPS) receivers, it seems that everyone is getting in on the act of using GPS for many things. Many people have vehicle navigations systems in their cars and on their phones that guide them to destinations very quickly and accurately. Right of Way (ROW) professionals are using recreational grade, handheld GPS receivers in increasing numbers. There are a wide variety of manufacturers offering rugged handheld GPS units for under \$200 that, in addition to being able to provide navigation on background maps, provide very accurate positions on the face of the Earth. All basic units will display position on the Earth's surface in terms of geographic coordinates – Latitude and Longitude.



Latitude is the angular distance north or south of the equator as measured from the center of the earth with the equator having a Latitude of 0° and the North and South Poles having a latitude of $+90^\circ$ and -90° , respectively. The latitude of San Diego, for example, is approximately 32.7152778° North (of the Equator).

Longitude is the angular distance measured from the center of the earth and east or west of the Greenwich Meridian that passes from the North Pole, through the Royal Observatory in Greenwich England, to the South Pole. The Greenwich meridian has a longitude of 0° .



The longitude of San Diego is approximately 117.0405556° West (of the Greenwich Meridian).

Recreational grade GPS receivers can output the Latitude/Longitude (Lat/Lon) position in a variety of formats: degree decimal (DDD.dddd), degrees and decimal minutes (DM.mm

mm), or degrees-minutes-seconds (D-M-S).

The Lat/Lon of San Diego, for example, expressed in the various formats is as follows:

DDD.dddd = $N32.7152778^\circ / W117.0405556^\circ$

DM.mmm = $N32^\circ42.9167' / W117^\circ02.4333'$

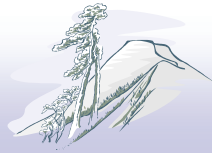
D-M-S = $N32^\circ42'55'' / W117^\circ02'26''$

What do these various units actually equate to distances in feet on the ground?

The length of one degree of latitude is the same all over the Earth – approximately 69 miles. Therefore, one minute of latitude equals approximately 1.15 miles (6081 feet) and one second of latitude equals approximately 0.02 miles (101 feet). At the equator, one degree of longitude equals the same distance as a degree of latitude but that distance decreases as one progresses north or south away from the equator with the distance being zero at each pole.

At the latitude of San Diego, one degree of longitude equals about 58 miles (as opposed to 69 miles at the equator), one minute of longitude equals about 0.97 miles (or 5116 feet – as opposed to 6081 feet at the equator), and one second of longitude equals about 85 feet (as opposed to 101 feet at the equator).

Note that the distances and relationships presented are approximate only. Hopefully this will help broaden your understanding of what the GPS unit is telling you when working in geographic coordinates. Subsequent articles will address other aspects of GPS that should prove useful to the ROW professional that uses GPS.



Sierra Nevada Chapter 46
International Right of Way Association
P.O. Box 11352
Reno, NV 89510-1352

Visit us on the web at www.irwchapter46.org

Chapter 46 will Offer Three Classes in 2011

By Carol Buonanoma, CMS, GISP

Meeting Dates

Board	September 1, 2010
Membership	September 15, 2010
Board	October 6, 2010
Membership	October 20, 2010
Board	November 3, 2010
Membership	November 17, 2010
Board	December 1, 2010
Membership	December 15, 2010
Board	January 5, 2011
Membership	January 19, 2011
Board	February 2, 2011
Membership	February 16, 2011
Board	March 2, 2011
Membership	March 16, 2011
Board	April 6, 2011
Membership	April 20, 2011
Board	May 4, 2011
Membership	May 18, 2011



We'll be kicking off 2011 with Course 900: **Principals of Real Estate Engineering**. Class participants will learn how to use engineering tools such as scale and protractor, gain basic skills in reading and interpreting engineering plans, and learn how to read, understand and plot simple property descriptions. Students will learn how to determine the effects of a project on a property. This class will be held at NV Energy, 6100 Neil Road, in Reno on February 10-11, 2011. The Facilitator will be Ralph C. Brown, SR/WA. Mr. Brown is an

independent review appraiser specializing in partial take appraisals.

In March, two related classes on environmental issues will be offered. On March 24, 2011, Course 600: **Environmental Awareness** will be offered. This class covers environment issues and problems facing companies and agencies acquiring or managing real property and rights of way. Course 603: **Understanding Environmental Contamination in Real Estate** on March 25, 2010. The class will focus on

the importance of knowing the behavior of contaminants in the environment, liabilities and auditing processes and contamination assessment, cleanup and closures. These classes will also be held at NV Energy.

The Facilitator for Courses 600 and 603 will be Clyde Johnson, SR/WA, R/W-RAC. Mr. Johnson is the 1995 recipient of IRWA's prestigious Frank C. Balfour Award.

For more information, contact Karen SooHoo by phone (775-332-6500) or email: Karen@property-specialists.net

Robert Schiffmacher, MAI

Real Estate Appraiser

Office, Commercial & Industrial Properties
Eminent Domain • Rights of Way • Easements

Warren & Schiffmacher, LLC

85 Keystone Ave. #C, Reno, NV 89503
Phone: (775) 686-2622 • Fax: (775) 688-4681
bobws@gbis.com
www.warrenchiffmacher.com

PROPERTY
SPECIALISTS
ETC

975 Roberta Lane, Ste. 104-B
Sparks, NV 89431

PATTY PAULSON, SR/WA
President

TEL: 775.332.6500
CELL 775.225.0024

FAX: 775.332.6510

Acquisition, Relocation & Project Administration Consultants
patty@property-specialists.net

Zephyr Advertising Rates:

2" x 3.5" (business card size) \$25.00 per year

3.5" x 4.5" (quarter-page) \$75.00 per year

4.5" x 7" (half-page) \$150.00 per year

7" x 9" (full-page) \$300.00 per year